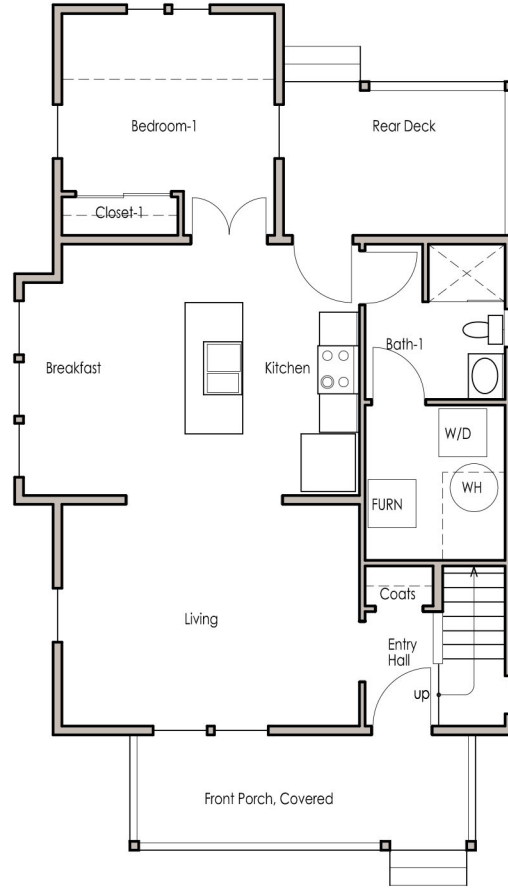


Upper Floor Plan



Main Floor Plan



Front Elevation

# American FourSquare

Type-B design

Date: 1-25-2019 Designs are subject to changes & updates

One-and-a-Half Story  
 Three Bedrooms (Master on Main Floor)  
 Two Bath  
 Covered Front Porch  
 Rear Deck  
 1,416 SF ( 792 SF Main Floor, 624 SF Upper Floor)

B-Town Cohousing S. Maxwell St. Bloomington, IN

Developer & Builder: Loren Wood Builders

Designer: Marc Cornett, Architect